

# Ubuntu 16.4 L2tp 設定

## 安裝 l2tp

1. 首先打開終端機



2. 輸入

```
sudo add-apt-repository ppa:nm-l2tp/network-manager-l2tp
```

```
root@ubuntu: ~
root@ubuntu:~# add-apt-repository ppa:nm-l2tp/network-manager-l2tp
Backport of network-manager-l2tp package from Debian Sid.

network-manager-l2tp is a VPN plugin for NetworkManager which provides support f
or L2TP and L2TP/IPsec (i.e. L2TP over IPsec) connections.

To add this PPA to your system, issue the following to install :
sudo apt install network-manager-l2tp network-manager-l2tp-gnome

Home page : https://github.com/nm-l2tp/network-manager-l2tp/wiki

Note: Ubuntu 17.10 and later ship with this package in their official repositori
es.

If you would like these backported packages added to an official Ubuntu 16.10 or
17.04 backports repository, please login to the following page and click the "D
oes this bug affect you?" link to vote to have them added:

https://bugs.launchpad.net/xenial-backports/+bug/1697934
More info: https://launchpad.net/~nm-l2tp/+archive/ubuntu/network-manager-l2tp
Press [ENTER] to continue or ctrl-c to cancel adding it
```

```
sudo apt-get update
```

```
root@ubuntu: ~
sudo apt install network-manager-l2tp network-manager-l2tp-gnome

Home page : https://github.com/nm-l2tp/network-manager-l2tp/wiki

Note: Ubuntu 17.10 and later ship with this package in their official repositori
es.

If you would like these backported packages added to an official Ubuntu 16.10 or
17.04 backports repository, please login to the following page and click the "D
oes this bug affect you?" link to vote to have them added:

https://bugs.launchpad.net/xenial-backports/+bug/1697934
More info: https://launchpad.net/~nm-l2tp/+archive/ubuntu/network-manager-l2tp
Press [ENTER] to continue or ctrl-c to cancel adding it

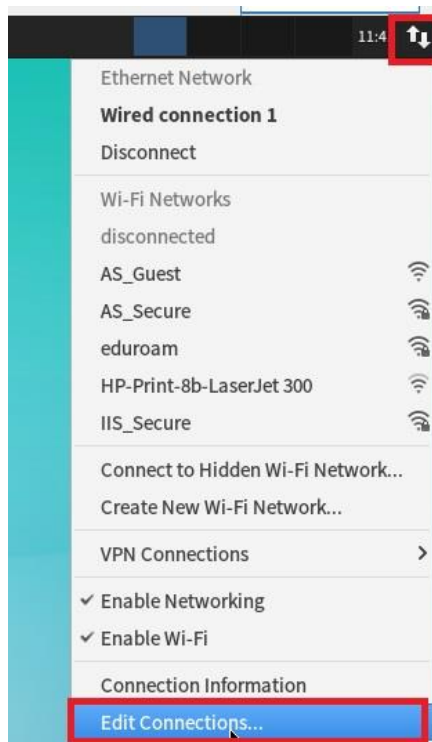
gpg: keyring `/tmp/tmp5a53bkck/secring.gpg' created
gpg: keyring `/tmp/tmp5a53bkck/pubring.gpg' created
gpg: requesting key 665AB177 from hkp server keyserver.ubuntu.com
gpg: /tmp/tmp5a53bkck/trustdb.gpg: trustdb created
gpg: key 665AB177: public key "Launchpad PPA for nm-l2tp" imported
gpg: Total number processed: 1
gpg:         imported: 1 (RSA: 1)
OK
root@ubuntu:~# apt-get update
```

```
sudo apt-get install network-manager-l2tp-gnome
```

```
root@ubuntu: ~  
root@ubuntu:~# add-apt-repository ppa:nm-l2tp/network-manager-l2tp
```

安裝完畢請依序下面設定方式進行 VPN client 端設定

1. 點選網路圖示 → Edit Connections...



2. 點選 edit Connections.....之後會跳出以下畫面請按 Add



3. 下拉到最下面選至 Layer2.....



3. 選到 Layer2..... → Create....

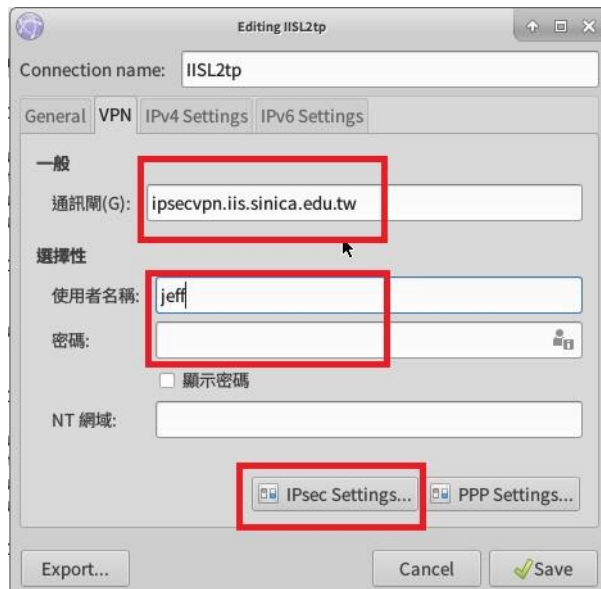


4.輸入通訊閘:ipsecvpn.iis.sinica.edu.tw 或是 vpn.iis.sinica.edu.tw

使用者名稱:輸入 vpn 帳號

密碼:輸入 vpn 密碼

以上輸入完畢，最後請點選 IPsecSettings....



5.Enable IPsec tunnel to L2TP host 勾選起來

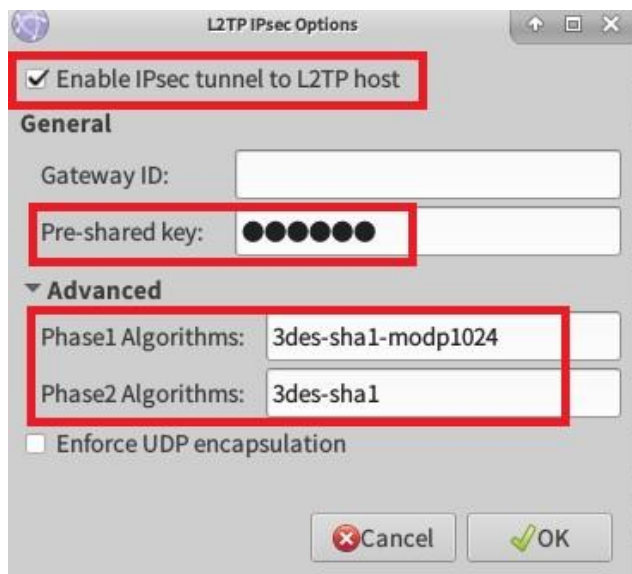
Pre-shared key:輸入 IISVPN

將 Advanced 展開

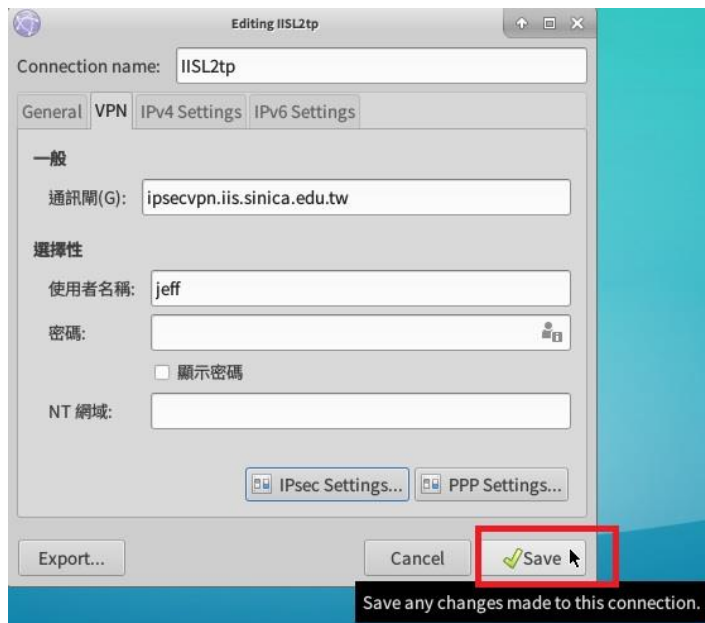
Phase1 Algorithms: 3des-sha1-modp1024

Phase2 Algorithms:3des-sha1

輸入完畢請按 ok



5.按完 ok 回到之前設定畫面後按 Save,完成設定



6.最後進行 vpn 連線

點選網路圖示→VPN Connection →IISL2tp

